

Broomstick



Artists Repertory Theater

Costume Design: Gregory Pulver

Directed by: Gemma Whelan

The Witch



Water Elemental Herbs

Apple		Loy	
Ash	Catnip	Levage	Peppy
Burdock	Elecampane	Meadowsweet	Rose
Chamomile	Geranium	Myrrh	Star Anise
Cypress	Henbane	Orris Root	Willow
	Hyacinth		Yarrow

Emetics; Subconscious; Dreams; Purification; Blood; Fluids





Earth Elemental Herbs

Balm of Gilead	Mandrake	
Bistort	Patchouli	
Cedar	Fern	Pine
Cinquefoil	High John the Conqueror	Sage
Clove	Honeysuckle	Slippery Elm
	Horehound	
	Jasmine	

material matters; physical form, wealth, career



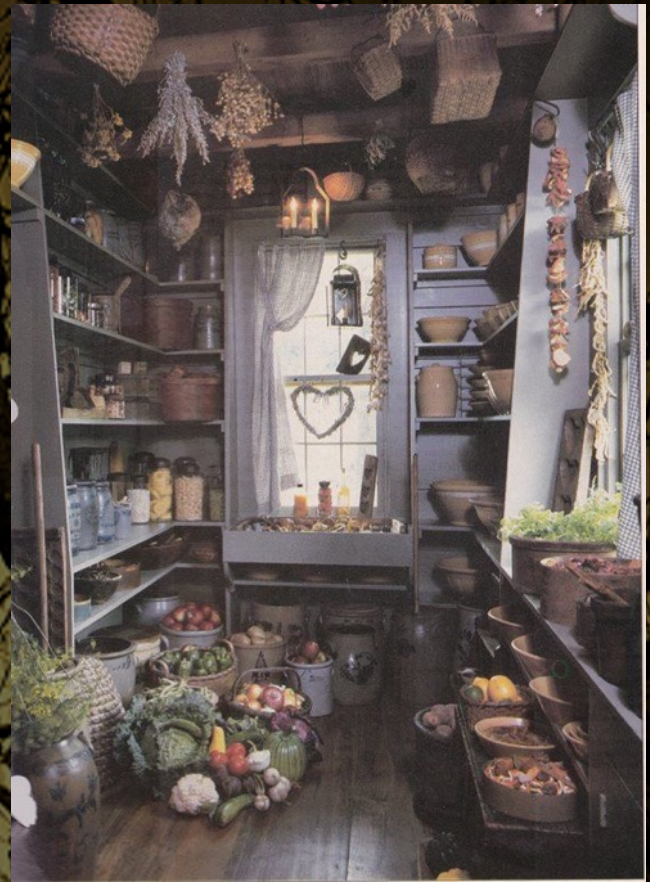
Her House



Her House



Her House



Air Elemental Herbs

Acacia		Mastic
Anise	Eucalyptus	Mistletoe
Benzoin	Eyebright	Spearmint
Broom	Hazel	Thyme
Comfrey	Lavender	Wormwood
Elder	Lemon Verbena	Peppermint
	Majoram	Sandalwood

Intellect; Mind; Creativity; Breath; Visions; Psychic

Via Palom Gorman



The Witch





The Witch



The Witch





Her Silhouette





Her Camisole



Her Bloomers





Her Blouse





Her Skirt



Her Sweater





Her Sweater

Her Charms



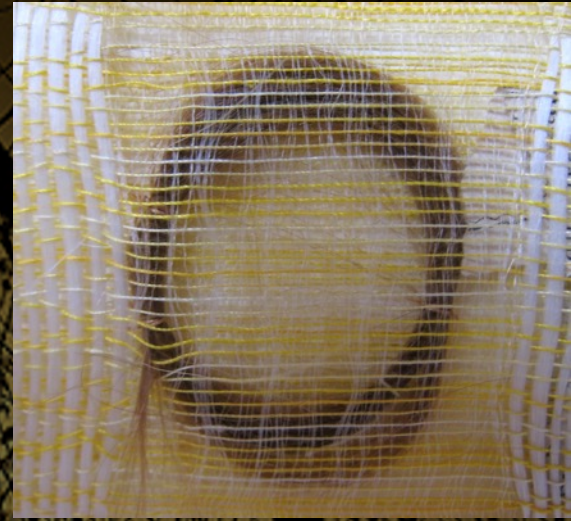
Her Charms



Her Charms



Her Charms



Her Charms





BROOMSTICK
ARTIST'S REPERTORY THEATRE

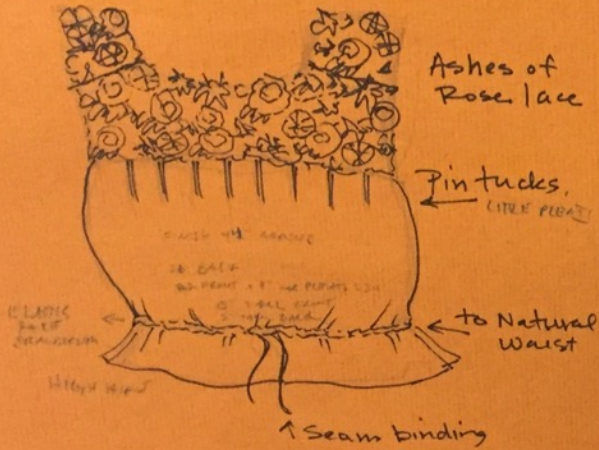


Margaret Paul
2015

1/4 1/4 hem →

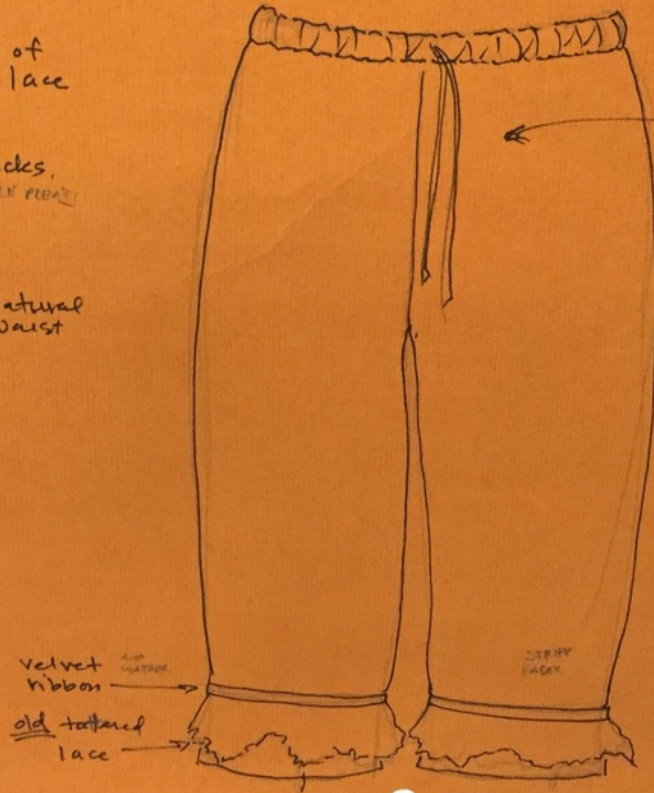
BROOMSTICK

The Cape



The Camisole

2 1/2" (1/2")
 40" long (1/2" for waistband)
 34" (1/2" for waistband)
 1/2" (1/2" for waistband)



wide waist band

Silky old seam binding

45" (1/2" for waistband)

40" long (1/2" for waistband)

1/2" for

1/2" for

1/2" for

1/2" for

1/2" for

1/2" for

1/2" for

1/2" for

1/2" for

1/2" for

1/2" for

1/2" for

1/2" for

1/2" for

1/2" for

1/2" for

1/2" for

1/2" for

1/2" for

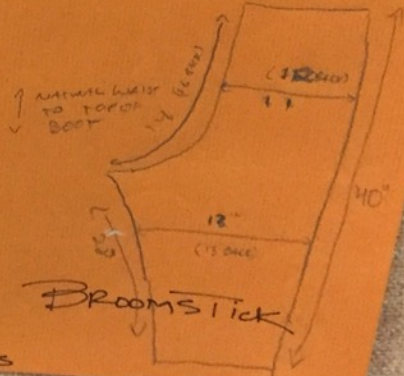
1/2" for

1/2" for

1/2" for

1/2" for

Full through seat & leg.

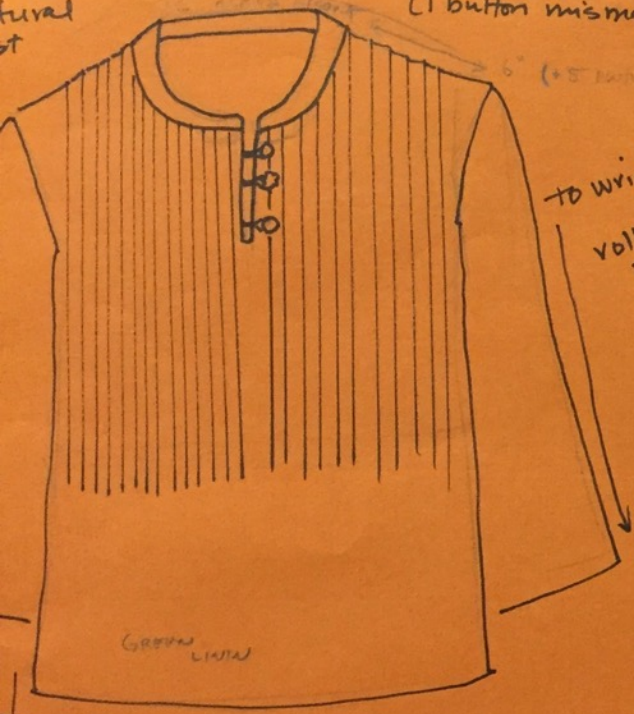


BROOMSTICK

The Bloomers

same color?
little pattern-fashion?

cks
tural
st



3 buttons & loops
(1 button mismatched)

6" (+5 inches)

to wrist
rolled to
3/4

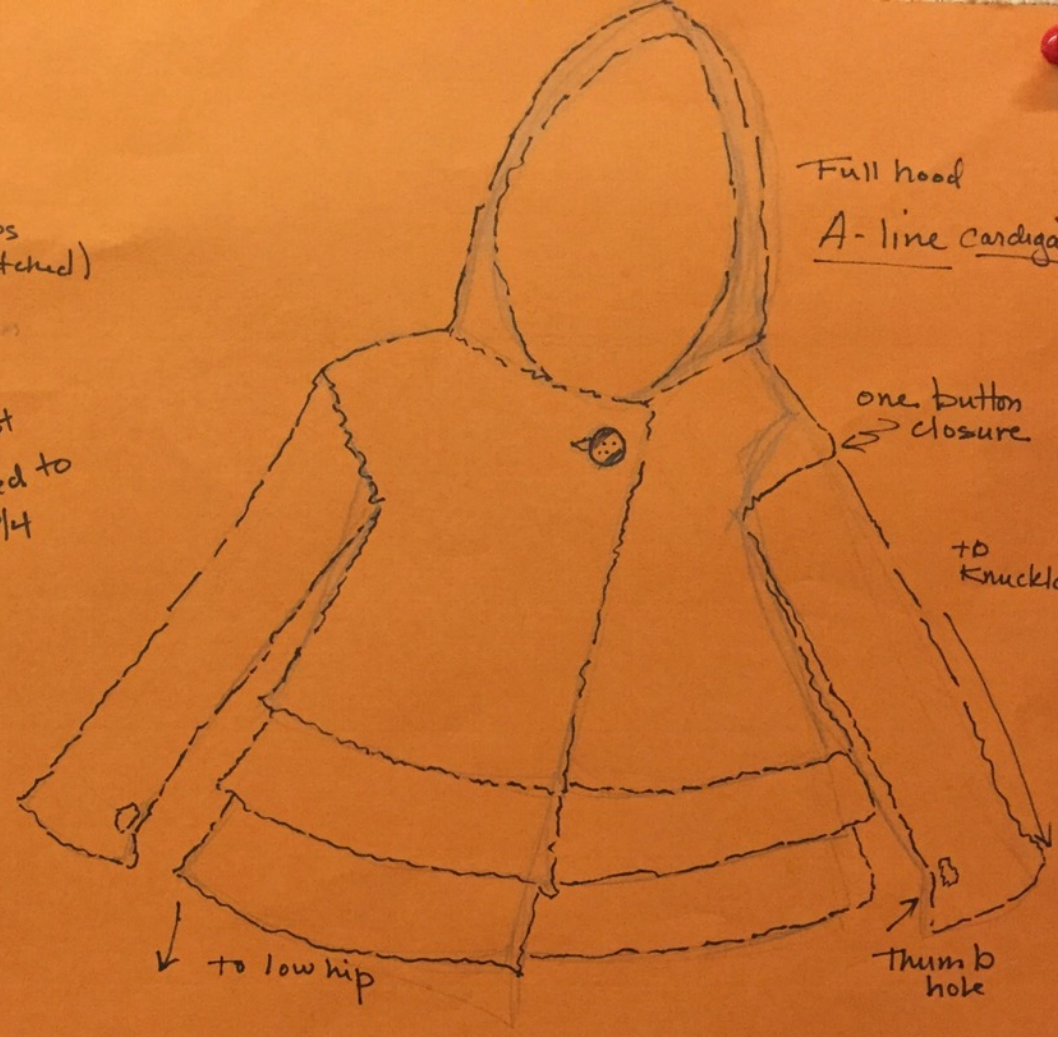
GREEN LINEN

- 45 ABOVE CUFF
- 16" ABOVE CUFF
- 32" LONG SLEEVE
- 25" LONG SLEEVE



The Blouse

Full hood
A-line cardigan



one button
closure

to
knuckles

to low hip

thumb
hole

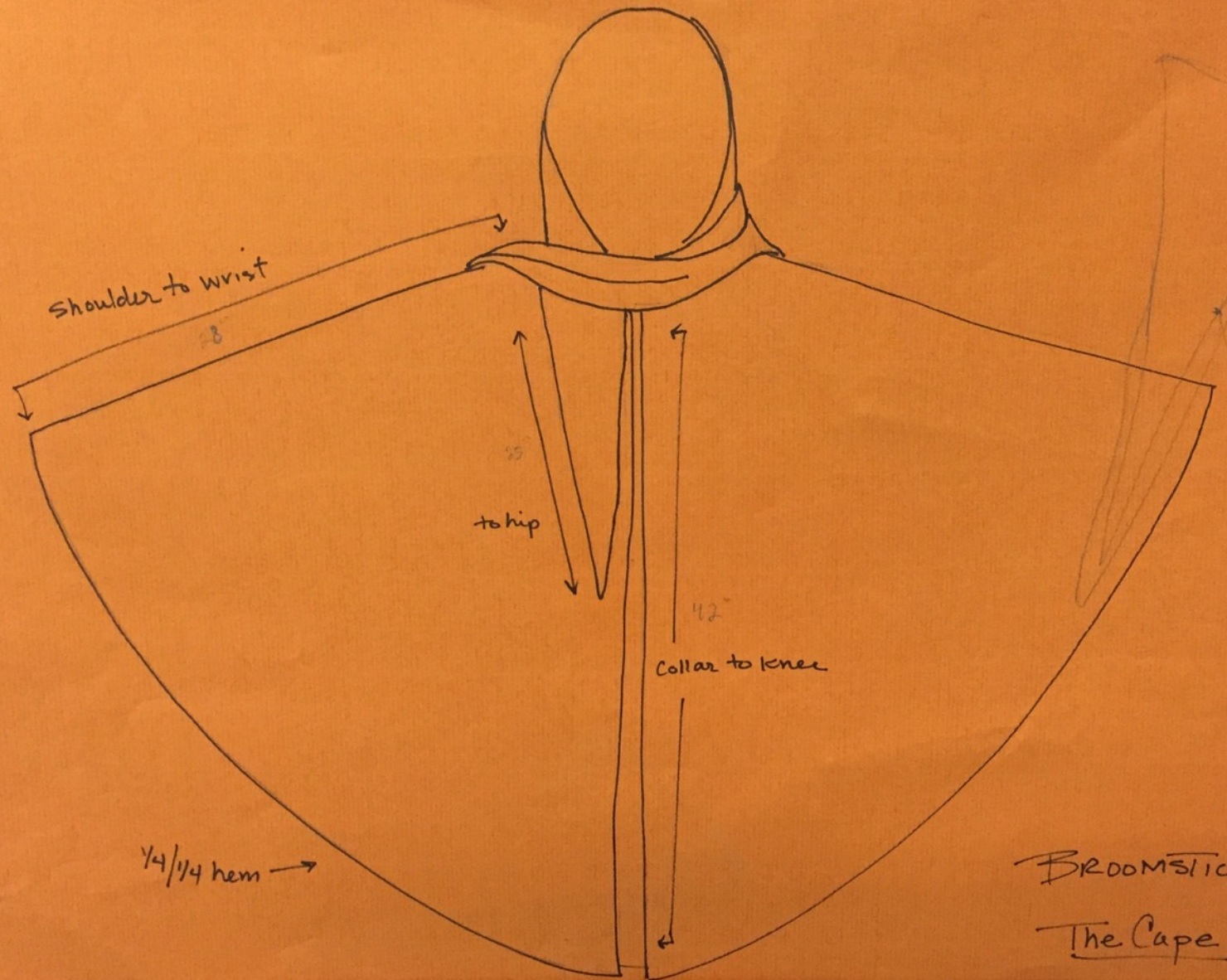
HAW BODY PATTERN

BROOMSTICK

The Sweater

The Sweater

The Sweater



BROOMSTICK
The Cape

wide waist band

